

# UV-LED DISINFECTION SOLUTIONS

Real Estate & Home Market



#acUVatech

@acuvatech

Tel: 1.800.980.8810 | Email: [info@acuvatech.com](mailto:info@acuvatech.com)

[acuvastore.com](http://acuvastore.com)



# The Importance of Employing UV-LED WATER DISINFECTION

Not all water sources in North America can be trusted, especially municipal city water sources that run water to both residential and commercial homes. Here are five reasons why UV-LED is important to adopt and employ.

## 63 Million

Americans exposed to unsafe drinking water

Nearly a fifth of the United States — from rural central California to the boroughs of New York City, are exposed to potentially unsafe water due to the country's aging distribution pipes. This means millions of people are susceptible to leaks and breaks in their water pipes, causing contaminations and bacterial growth!

Clear Water is **NOT**  
Always a sign of  
Clean Water

More than half of the outbreaks are caused by bacteria Legionella, and parasites Cryptosporidium or Crypto, and Giardia, both of which cause diarrheal illness.

## BRAIN-EATING AMOEBAS

in city's water supply  
kills 6-year-old, leads  
Texas to declare a  
**DISASTER**

6-year-old Josiah died on Sept. 8 after being infected with a brain-eating amoeba. 3 of 11 water samples collected by CDC were found positive

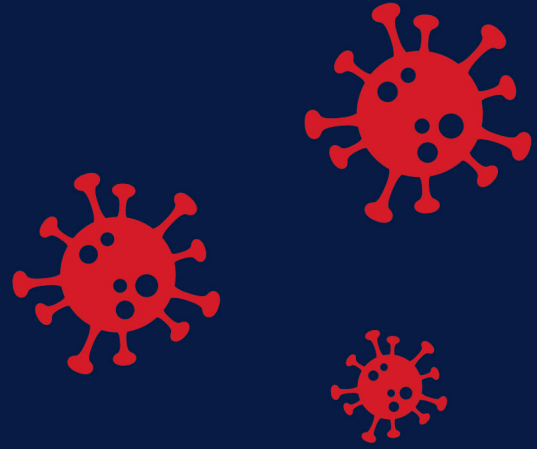
'It's a Silent  
**KILLER**':

fears of legionella  
grow amid pandemic

Many micro-organisms slip through the cracks of US drinking water systems, sickening up to an estimated 32 million people every year. Attention to legionella has been further heightened by the Covid-19 pandemic. Some health experts express concern that a prior infection with the virus that causes Covid-19 could make a person more susceptible to legionella.

# DID YOU KNOW

The ribonucleic acid (RNA) from the virus that causes COVID-19 has been found in untreated wastewater.



COVID-19 FOUND IN THE SEWAGE AND WASTEWATER SYSTEMS ACROSS THE U.S. -> EPA ASSESSING AND MONITORING SARS-COV-2 VIRUS LEVELS IN SEWAGE.

Hundreds of students at Utah State University quarantine after finding elevated amounts of COVID-19 in wastewater samples collected from four residence halls on campus.

A wastewater treatment plant in Massachusetts found that the amount of SARS-CoV-2 particles in the sewage samples indicated a far higher number of people likely infected with Covid-19 than the reported cases in that area.



# DID YOU KNOW

Leaky sewers due to aging pipes have huge detrimental effects on groundwater quality, which also effect residents' quality of life.



# ECO NX-SILVER

UV-LED Water Purifier

The Eco NX-Silver is the most powerful, yet compact and light-weight water purifier ever designed. You can easily install an Acuva unit under the sink for worry-free point-of-use drinking water. Unlike other water purification units in the market, Acuva systems eliminate up to 99.9999% of all kinds of bacteria and viruses, which can go undetected by average filters. You can drink from any water source with an Acuva water purification system.



Certified by IAPMO R&T Against:

NSF/ANSI 55 Class 'B' Ultraviolet Microbiological Water Treatment Systems

NSF/ANSI 372 Drinking Water System Components - Lead Content



Safe &  
Convenient



Eco-Friendly  
Solution



Advanced  
Technology



No Mercury  
Contamination

## Specifications

Flow Rate	1.2L/min	Max. Water Temperature	40°C
Dose Delivery	>16 mJ/cm <sup>2</sup>	Max. Working Pressure	100 PSI
Water Inlet Fitting	¼" OD Push-to-Connect	Minimum Working Pressure:	12 PSI
Water Outlet Fitting	¼" OD Push-to-Connect	LED Life-time (on demand)	1,000 hr
Power Consumption	Approx. 14W (Active)	Max. Ambient Relative Humidity	70%

## What's In the Box



Smart Faucet with  
Indicator Light



Composite In-line  
Water Filter



Mounting  
Equipment



Plumbing  
Supplies



Power  
(AC or DC)

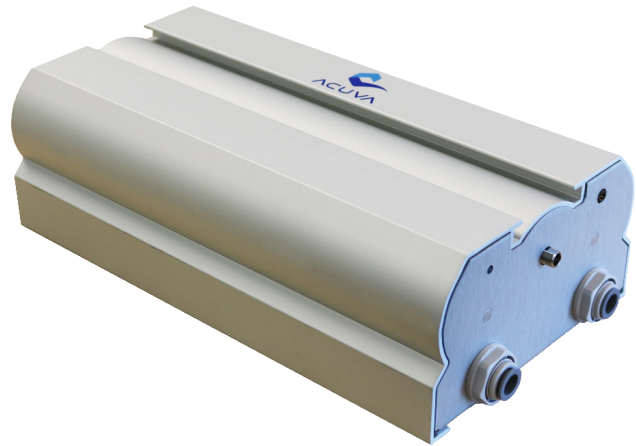
# ARROW 5

UV-LED Water Purifier

This is our second largest purification system which can supply multiple sources of clean water. This provides you with the capacity to hook up the system to your drinking water faucets, ice maker, kitchen faucet, and washroom faucet. The Arrow 5 can dispense up to 900,000 liters of water in its lifetime, lasting up to 10 years.



Compatible WITH or WITHOUT the Smart Faucet



**Safe & Convenient**



**Eco-Friendly Solution**



**Advanced Technology**



**No Mercury Contamination**

## Specifications

Flow Rate	5L/min	Max. Water Temperature	40°C
Dose Delivery	>16 mJ/cm <sup>2</sup>	Max. Working Pressure	100 PSI
Water Inlet Fitting	3/8" OD Push-to-Connect	Minimum Working Pressure:	40 PSI
Water Outlet Fitting	3/8" OD Push-to-Connect	LED Life-time (on demand)	3,000 hr
Power Consumption	Approx. 60W (Active)	Max. Ambient Relative Humidity	70%

## What's In the Box



Smart Faucet with Indicator Light



Composite In-line Water Filter



Mounting Equipment



Plumbing Supplies



Power (AC or DC)

# ADDITIONAL COMPONENTS INFORMATION

Our systems come complete with in-line pre-filters and the option to purchase with or without the Acuva Smart Faucet.

## Smart Faucet



The **Eco NX** and **Arrow** units can be installed with our smart faucet (also compatible with other faucets).

The system is activated the moment you turn on the faucet. This saves you valuable energy, unlike traditional UV lamps that always have to be on. When the blue light is on you can be assured that the system is working effectively to provide you with safe drinking water.

## Pre-Filters



The **Eco NX units** comes with the choice of either a **Standard Pre-Filter** or an **Advanced Pre-Filter**.

The **Arrow units** comes complete with only the **Advanced Pre-Filter**.

### STANDARD PRE-FILTER

Lasts up to 1000 gallons and removes chlorine, sediments, odor and taste.

### ADVANCED PRE-FILTER

Lasts up to 4000 gallons and removes lead, heavy metals, chlorine, mercury, carcinogens, and other contaminants, as well as turbidity, unpleasant odors and tastes

## Power Supply

Our systems can run on both 12V-DC or 120-240V AC.

For most homes running on grid power, the best choice is the 120-240V AC. For most RVs, boats and other motorhomes running on battery power, the best choice is 12V DC.